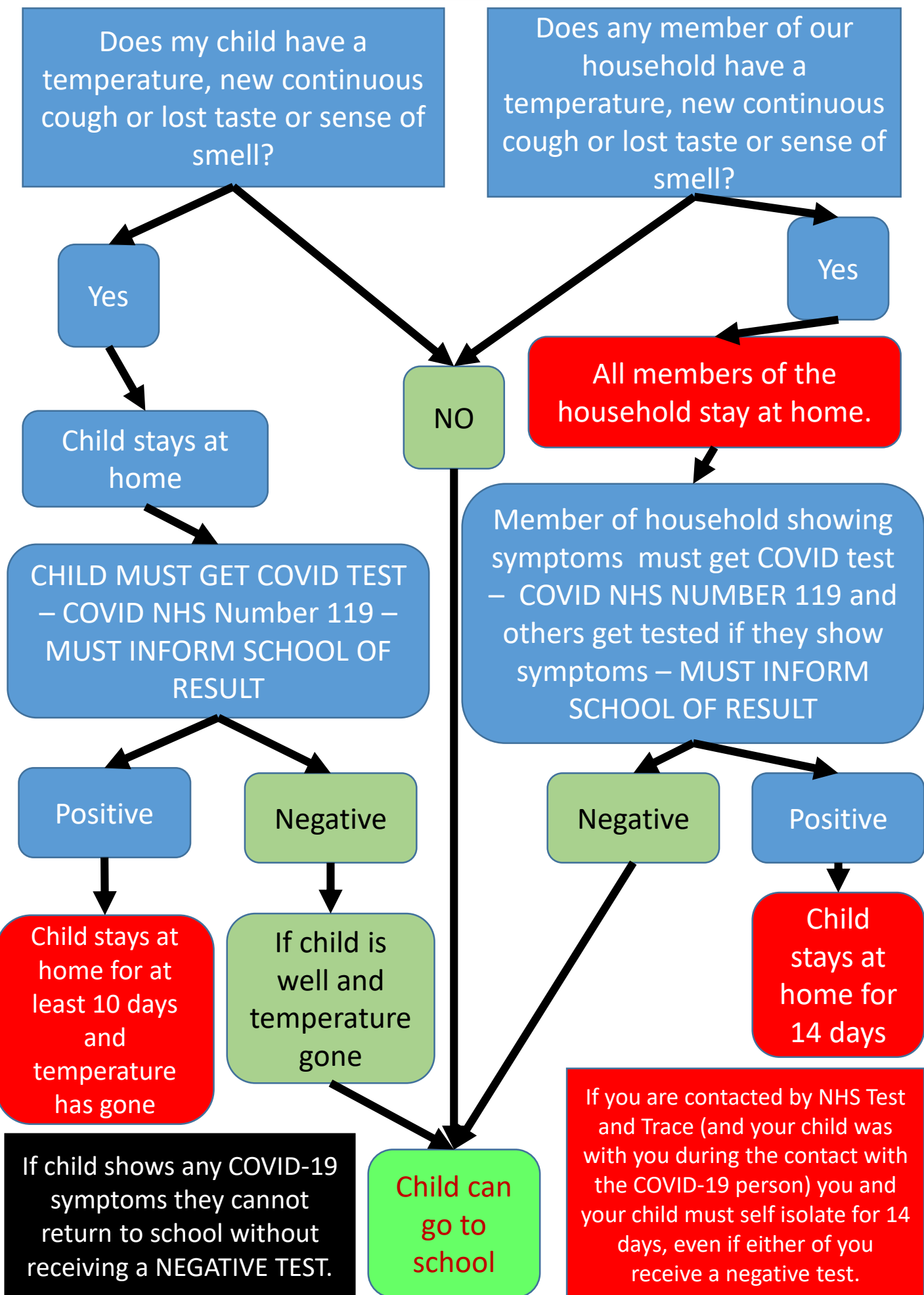


# COVID SYMPTOMS AT HOME FLOW CHART



# ACTIONS IF CHILD SHOWS COVID-19 SYMPTOMS AT SCHOOL

CHILD HAS TEMPERATURE, DEVELOPS NEW CONTINUOUS COUGH or LOSES SENSE OF TASTE OR SMELL

CHILD

STAFF

Taken to the Hall (if not being used) to sit by open door. Front entrance if not.

Staff member from classroom / year group put on full PPE – mask, visor, apron and gloves

PPE staff member and child stay in Hall or front entrance – avoiding other staff and children

Child stays in isolation

PPE staff member takes temperature. Inform office staff if over 37.8 degrees. Member of staff stays with child

PPE staff member informs SLT and office manager of the temperature and SLT or Mrs Marshall ring parents to request IMMEDIATE pick up and request parents to organise a COVID test. Parent to wait in front entrance.

Mrs Marshall or SLT gets siblings and child's personal items.

PPE Member of staff take child to front entrance and reminds parent to get a COVID-19 test and let us know the result.

PPE Member of staff remove PPE and places in bin bag tied and takes outside to leave by big bins, wash hands thoroughly and return to class

CLEANERS/CARETAKER/SLT CLEAN ISOLATION AREA WITH MILTON / BLEACH – WEARING FULL PPE